

FLOE®
SHIMMERING SPARKLES



620/00-Sunshine
Base R46, Metallo Bronze

ENG

Floe®

Floe® is a textured paint effect with a crystalline finish that will transform your home in a reflection of large and unexplored spaces by recreating through its warm and shimmering colors the atmosphere of the sandy deserts or the frosty and luminescent icy expanses of the Antarctic.

Technical Name
Textured metallic finish incorporating sparkles.

Key Properties

- Unleaded
- Water based
- Washable (after full curing)
- Non-flammable
- Heat resistant
- Odorless
- 3 attractive base colors (600, 620 or 630) and 5 additives (G6, G7, G8, G9, Metallo Bronze)
- Very low VOC content in compliance with:
 - EU directive 2010/79/EU
 - French decree No: 2011-321

Pack Size

- 1US Quart - (1 kg)
- 1US Gallon - (2.5 kg)
- Additive 0.6 kg and/or Metallo 0.85 kg (for 1Gallon)
- Additive 0.24 kg (for 1 Quart)

Recommended Uses

Internal applications.

Type of Substrate

Plaster, embossed wall coverings, gypsum board, concrete, cement rendering, brick work.

Finish

A sandy effect with illuminating sparkles.

Coverage

6-7 m² per kg.

Drying Time

15 minutes to 1 hour depending on temperature and humidity.

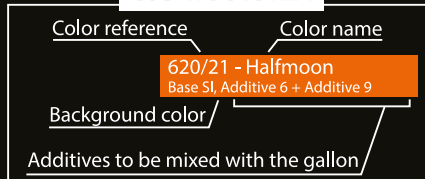
Thinner

No thinning required.

Preparation

All surfaces to be painted should be clean, dry and free from loose and flaking material. Rub down and rinse. Prime the substrate with the appropriate COLORTEK® CO.ACRYL or C1A base (11 colors available: PW, SI, R10, R17, R27, R46, R65, R66, R68, R72 & R96).

CODING SYSTEM



Instructions

The shade is obtained by mixing one of the additives with the required Floe® base (600, 620 or 630). Stir well - Spread Floe® in small quantities using alternative brush strokes in all directions; shift the sparkle particles to achieve the desired final effect.

A second coat could be applied and will result in a richer final effect.
Do not apply at temperatures below 5°C or when rain is expected.

Recommendation

To obtain the optimum Floe® finish and bring out the special sparkly crystals in this product, proper lighting should be directed to the designated walls.

Cleaning

Remove as much product as possible from application equipment before cleaning. Clean equipment immediately after use with warm soapy water and rinse thoroughly.

Do not empty product into drains or watercourses.

Additional Info

Product batches are tested using a quality control system and are ISO 9001:2008 certified.



Transportation & Storage

Care should be taken to avoid spillage. Protect from frost and humidity.

FR

Floe®

Floe® est une peinture à effets texturés de finition cristalline proposée dans une gamme de teintes chatoyantes et de couleurs fraîches qui fera vibrer en votre intérieur les grands espaces intacts et inexplorés en recréant sur vos murs l'ambiance chaude du sable fin des déserts, ou l'éclat et lumière des étendues enneigées de l'antarctique.

Nom Technique

Finition métallisé et brillante.

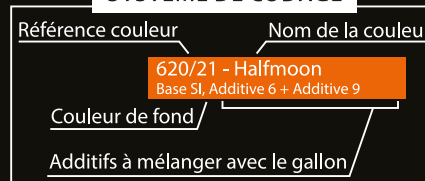
Propriétés

- Ne contient pas de plomb
- Produit en base eau
- Lavable
- Résiste à la chaleur
- Inodore
- 3 bases (600, 620 ou 630) et 5 additifs (G6, G7, G8, G9, Metallo Bronze)
- Faible teneur en COV conformément aux:
 - Directive EU directive 2010/79/EU
 - Décret Français No: 2011-321

Emballage

- 1US Quart – (1kg)
- 1US Gallon – (2.5 kg)
- Additif 0.6 kg et/ou Metallo 0.85 kg (pour 1Gallon)
- Additif 0.24 kg (pour 1 Quart)

SYSTÈME DE CODAGE



Usage Recommandé

Application en intérieur.

Types de Support

Enduit, ciment, plâtre et plaque de plâtre, anciennes peintures usuelles absorbantes, etc.

Finition

Texturée à effet givré.

Rendement

6 à 7 m² parkg.

Temps de Séchage

Environ 15 à 60 minutes en fonction des conditions climatiques et de la température ambiante.

Diluant

Aucune dilution requise.

Préparation du Support

Le support doit être dur, propre, sain, sec, cohésif et libre de toute matière telle que salpêtre, mousse, lichen ou autres microorganismes pouvant empêcher l'adhérence du produit sur le support. Dans un premier temps, appliquer la couleur appropriée de la sous-couche COLORTEK® CO.ACRYL ou C1A disponible en 11 teintes (PW, SI, R10, R17, R27, R46, R65, R66, R68, R72 & R96).

Application

Sélectionner l'effet désiré en mélangeant la base appropriée (600, 620 ou 630) avec l'un des additifs disponibles. Bien mélanger - Appliquer Floe® à l'aide d'un spalter en effectuant des mouvements croisés de balayage en prenant soin d'alterner les mouvements afin d'obtenir une finition naturelle non régulière. Pour un effet plus riche, appliquer une seconde couche une fois la première ayant proprement séchée.

Ne pas appliquer à une température ambiante inférieure à 5°C ou par temps pluvieux.

Recommandation

Il est recommandé d'installer un système d'illumination approprié afin de mettre en valeur les cristaux et l'effet précieux de Floe®.

Nettoyage des Outils

Éliminer autant que possible le reste du produit de la surface des outils. Nettoyer ces derniers en les frottant vigoureusement avec de l'eau et du savon.

Ne pas vider les restes du produit dans égouts ou les voies d'eau.

Information Additionnelle

Le processus de fabrication de Floe® est soumis au plus stricts contrôles de qualité certifiés conformes au standard ISO 9001:2008.



Transport et Stockage

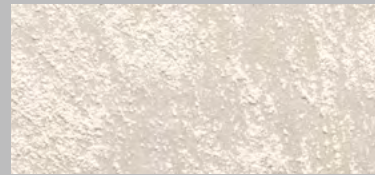
Stocker le produit à l'abri de l'humidité et des températures de gel.



Synergy, Added Value, Continuous Improvement, Diversity, Integrity, Social Responsibility.



www.colortek.eu
info@colortek.eu



600/00 - Iceberg Base White



600/67 - Silverdrop Base 34-1



600/47 - Shantung Base 33-2



600/58 - Skyline Base 35-2



600/74 - Quartz Base 141-1



600/82 - Rainstorm Base 116-6



600/11 - Seasalt Base 19-4



600/10 - Greenbay Base 1-2



620/00 - Silverlining Additive 6



620/00 - Lamar Additive 8



620/21 - Halfmoon Base SI, Additive 6 + Additive 9



620/70 - Jealous Base R72, Additive 9



600/13 - Avalanches Base 40-1



600/08 - Rhythm Base 37-3



600/46 - Fog Base 124-1



600/59 - Dreamy Base 124-1



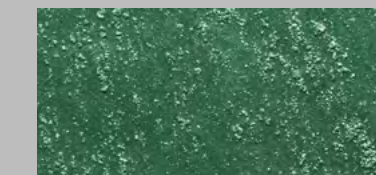
600/76 - Glass Base 141-1



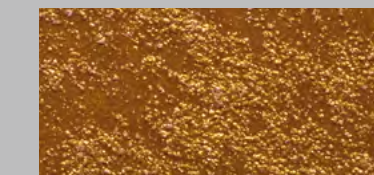
600/83 - Bluebell Base 19-4



600/31 - Watery Base 20-3



600/72 - Pologreen Base 110-6



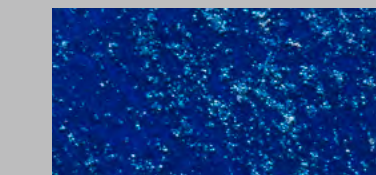
620/18 - Evergold Base R17, 2 x (Additive 7)



630/00 - Melt Base R17



620/71 - Misty Base R66, Additive 8



620/55 - Theblues Base R68, Additive 6



600/22 - Slab Base 40-2



600/06 - Ash Base 35-5



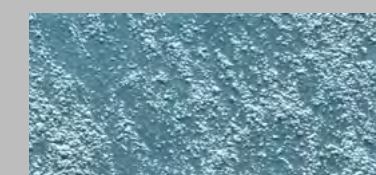
600/77 - Moguls Base 34-2



600/50 - Azura Base 37-2



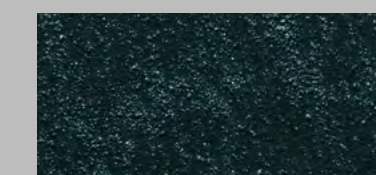
600/86 - Lime Base 136-7



600/91 - Raindrop Base 19-5



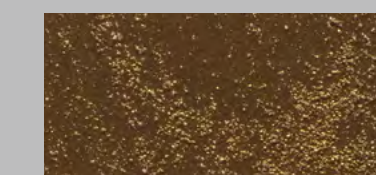
600/30 - Bluefoam Base 20-3



600/69 - Bluejewel Base R27



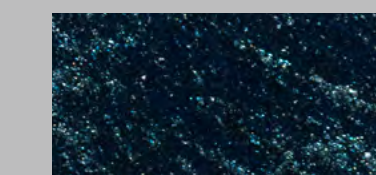
630/51 - Goldshade Base R17, Additive 7



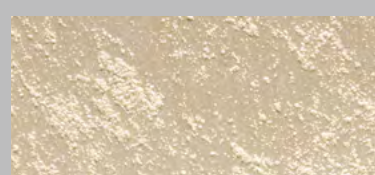
630/55 - Heatwave Base R17



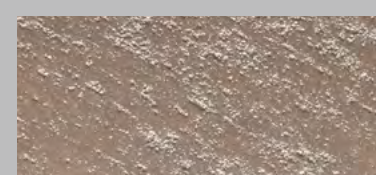
620/67 - Purplewish Base R66, Additive 9



620/33 - Dive Base R65, Additive 8



600/17 - Walrus Base 40-2



600/23 - Cascades Base 37-3



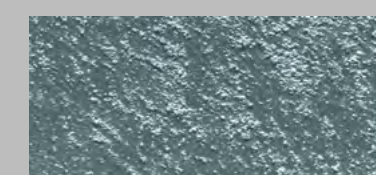
600/44 - Reflections Base 34-4



600/75 - Tempest Base 38-5



600/45 - Stardust Base 136-7



600/95 - Icing Base 113-7



600/24 - Frozen Base 74-5



630/27 - Olivebranch Base R17



630/63 - Golddust Base R17, Additive 7



630/41 - Royal Base R17



620/32 - Brunette Base R46, Additive 9



620/04 - Coolaqua Base R65, Additive 9



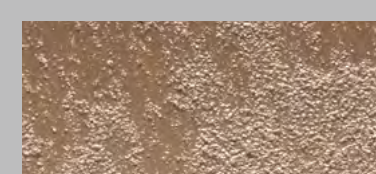
600/34 - Snowpack Base 90-1



600/88 - Nightshade Base 148-6



600/57 - Minerals Base 147-2



600/97 - Dustyroad Base 124-6



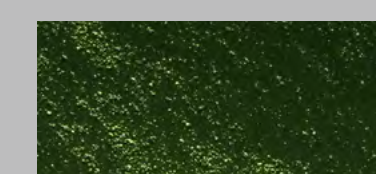
600/89 - Steamer Base 136-7



600/93 - Cool Base 146-1



600/92 - Seaside Base 74-5



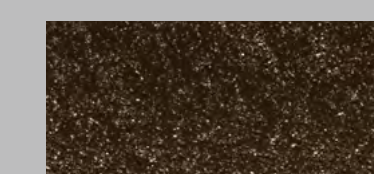
630/90 - Fusion Base R17



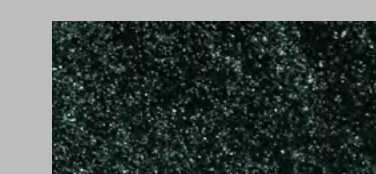
630/42 - Imperial Base R17, Additive 7



630/38 - Goldpowder Base R17



620/38 - Nighttime Base R96, Additive 9



620/14 - Riverside Base R27, Additive 9



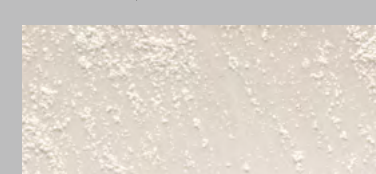
600/01 - Sandbar Base 94-7



600/25 - Wallgrey Base 34-5



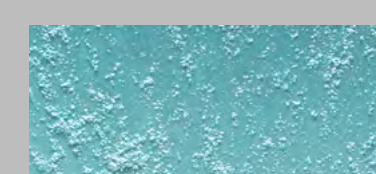
600/29 - Slush Base 34-5



600/53 - Crust Base 34-1



600/81 - Thunder Base 136-1



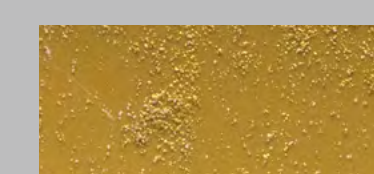
600/99 - Underseas Base 111-6



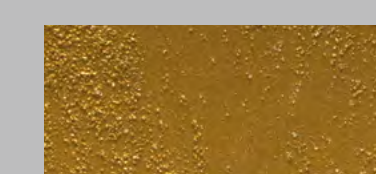
600/03 - Seastar Base 74-4



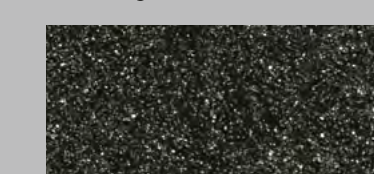
630/49 - Pine Base R17



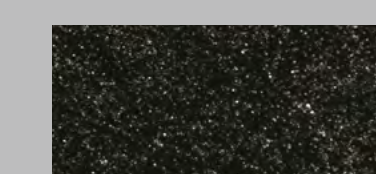
630/62 - Goldpiece Base R17



630/64 - Regal Base R17, Additive 8



620/26 - Darkspark Base R10, Additive 9



620/05 - Blackside Base R10, Additive 9