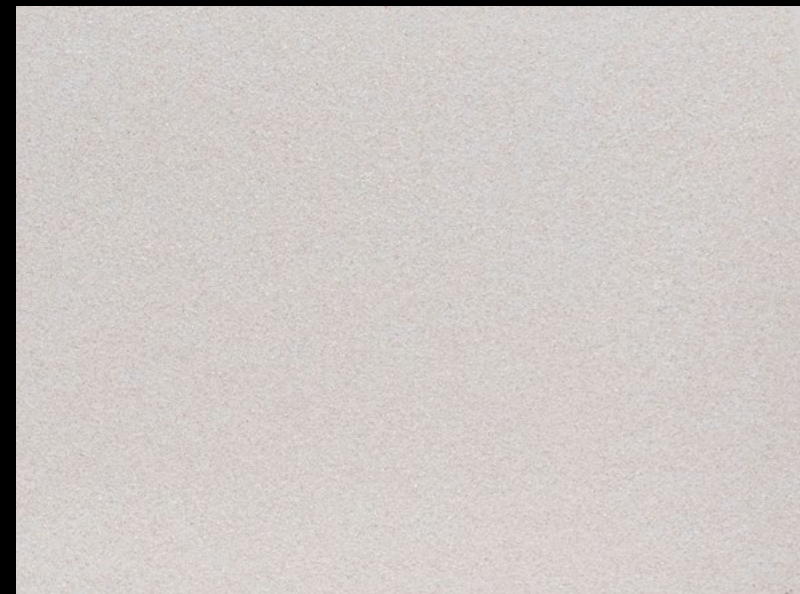




# Akasan®

Akasan, cosmi-paint



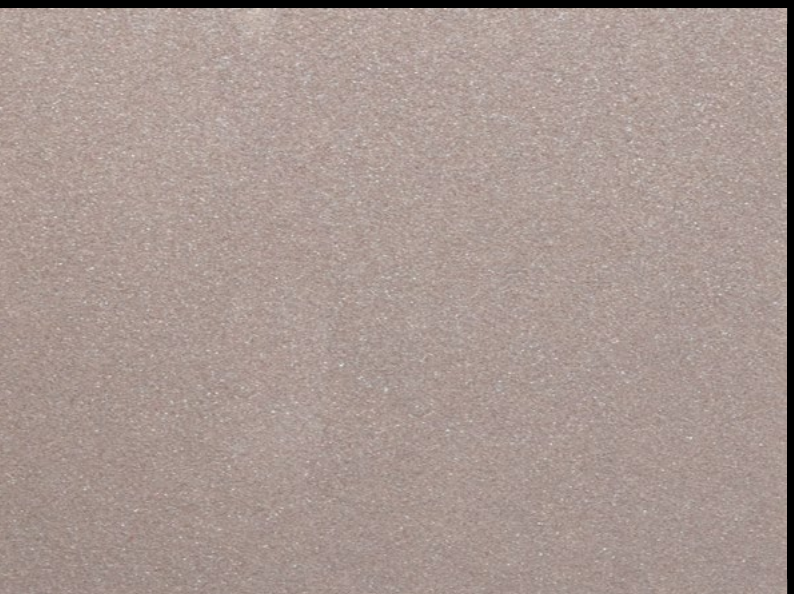
900/00-Universal  
Additive 6



950/26-Latte  
Additive 6



900/06-Blush  
Additive 6



950/30-Cocoa  
Additive 6



ENG

## Akasan®

Akasan® is an interior decorative finish, enriched with precious metallic inserts creating a sort of "chromatic dispersion effect." Its range of 84 shades will help you create the perfect color scheme.

**Technical Name**  
Polychromatic Paint.

**Key Properties**

- Unleaded
- Water based
- Washable (after full curing)
- Odorless
- 2 base color 900/00 Universal-950/00 Skin
- Very low VOC content in compliance with:
  - EU directive 2010/79/EU
  - French decree No: 2011-321

**Pack Size**

- 1 US Quart - (1kg)
- 1 US Gallon - (2.5 kg)
- Additive 0.6 kg (for 1 Gallon)

**Recommended Uses**

Internal applications.

**Type of Substrate**

Plaster, embossed wall coverings, gypsum board, concrete, cement rendering, brick work and block work.

**Finish**

Cosmi-paint.

**Coverage**

6-8 m<sup>2</sup> per kg.

**Drying Time**

1-2 hours depending on ambient temperature and humidity.

**Thinner**

Up to 10% of clean water if needed (for spray application).

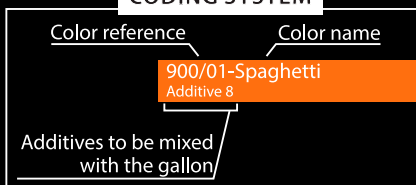
**Preparation**

All surfaces to be painted should be clean, dry and free from loose & flaking material. Rub down & rinse. Prime the substrate with COLORTEK® CO.SHEEN, CO.ACRYL or C1 Family.

**Instructions**

Stir well. Apply Akasan® by a splatter brush or with a spray-gun. For brush application, spread the product uniformly in order to avoid the formation of lumps on the surface. After 6 to 8 hours, when Akasan® has dried, apply the second coat in the same way. For spray application, dilute the product with approximately 10% water. Use a spray-gun with an upper tank and 2.5 mm

**CODING SYSTEM**



FR

## Akasan®

Akasan® est une peinture de décoration intérieur enrichie avec des charges métalliques qui créent des effets spéciaux de dispersions chromatiques.

**Nom Technique**

Peinture polychrome.

**Propriétés**

- Ne contient pas de plomb
- Produit en base eau
- Lavable
- Inodore
- 2 couleur de base 900/00 Universal-950/00 Skin
- Faible teneur en COV conformément aux:
  - Directive EU directive 2010/79/EU
  - Decret Français No: 2011-321

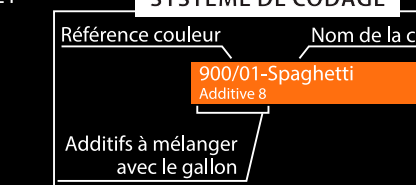
**Emballage**

- 1 US Quart - (1kg)
- 1 US Gallon - (2.5 kg)
- Additif 0.6 kg (pour 1 Gallon)

**Usage Recommandé**

Application en intérieur.

**SYSTÈME DE CODAGE**



diameter nozzle, pressurized to 3/5 atmospheres, at a distance of 30 to 50 cm from the surface. Apply the first coat, working in horizontal direction; after approximately 6 to 8 hours, apply a second coat, working in vertical direction to achieve even coverage of the surface. For protection apply a coat of COLORTEK® 4005 (F), 4010 or COLORTEK® PL1.

**Do not apply at temperatures below 5°C or when rain is expected.**

**Recommendation**

To obtain the optimum Akasan® finish and bring out the metallic effect in this product, proper lighting should be directed to the designated walls.

**Cleaning**

Remove as much product as possible from application equipment before cleaning. Clean equipment immediately after use with warm soapy water & rinse thoroughly.

**Do not empty product into drains or watercourses.**

**Additional Info**

Product batches are tested using a quality control system and are ISO 9001:2008 certified.

**Transportation & Storage**

Care should be taken to avoid spillage. Protect from frost & humidity.



**Types de Support**

Enduit, ciment, plâtre et plaque de plâtre, anciennes peintures usuelles absorbantes, etc.

**Finition**

Peinture Cosmétique.

**Rendement**

6 à 8 m<sup>2</sup> par kg.

**Temps de Séchage**

Environ 1 à 2 heures en fonction des conditions climatiques et de la température ambiante.

**Diluant**

Diluer avec un maximum de 10% d'eau si nécessaire (pour l'application par pistolet).

**Préparation du Support**

Le support doit être dur, propre, sain, sec, cohésif et libre de toute matière telle que salpêtre, mousse, lichen ou autres microorganismes pouvant empêcher l'adhérence du produit sur le support. Dans un premier temps, appliquer la couleur appropriée de la sous-couche COLORTEK® CO.SHEEN, CO.ACRYL ou Famille C1.

**Application**

Secouer avant d'appliquer. Appliquer Akasan® en deux passes à l'aide d'une brosse ou d'un pistolet. Pour l'application à la brosse, étaler uniformément le produit afin d'éviter la formation de grumeaux sur la surface. Après 6 à 8 heures, une fois Akasan® ayant séché, appliquer une deuxième couche de la même manière. Pour l'application par pistolet, diluer le produit à un ration d'environ 10% d'eau et utiliser une buse de 2,5 mm de diamètre et une pression de 3/5 atmosphères, à une distance de 30-50 cm de la surface. Afin d'obtenir une couverture uniforme de la surface, appliquer la première couche en travaillant dans une direction horizontale et la seconde couche de façon verticale. Pour la protection de la surface, appliquer une couche de COLORTEK® 4005 (F), 4010 ou COLORTEK® PL1.

**Recommandation**

Il est recommandé d'installer un système d'illumination approprié afin de mettre en valeur l'effet métallique de Akasan®.

**Nettoyage des Outils**

Éliminer autant que possible le reste du produit de la surface des outils. Nettoyer ces derniers en les frottant vigoureusement avec de l'eau et du savon.

**Ne pas vider les restes du produit dans égouts ou les voies d'eau.**

**Information Additionnelle**

Le processus de fabrication de Akasan® est soumis au plus stricts contrôles de qualité certifiés conformes au standard ISO 9001:2008

**Transport et Stockage**

Stocker le produit à l'abri de l'humidité et des températures de gel.



Synergy, Added Value, Continuous Improvement, Diversity, Integrity, Social Responsibility.





900/00-Universal  
Additive 8



900/00-Universal



900/15-Like Linen  
Additive 8



900/15-Like Linen



900/20-Ballerina  
Additive 8



900/20-Ballerina



950/25-Dusty  
Additive 8



950/25-Dusty



950/24-Bossanova  
Additive 8



950/24-Bossanova



900/32-Privacy  
Additive 8



900/32-Privacy



900/31-See Blue  
Additive 8



900/31-See Blue



900/40-Warmup  
Additive 8



800/74-Simply Clean



900/08-Waltz  
Additive 8



900/08-Waltz



900/01-Spaghetti  
Additive 8



900/01-Spaghetti



900/12-Silk Beige  
Additive 8



900/12-Silk Beige



900/14-Taupe  
Additive 8



900/14-Taupe



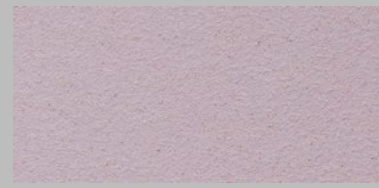
950/00-Skin  
Additive 8



950/00-Skin



900/36-Engaged  
Additive 8



900/36-Engaged



900/39-Oil Blue  
Additive 8



900/39-Oil Blue



900/45-The Edge  
Additive 8



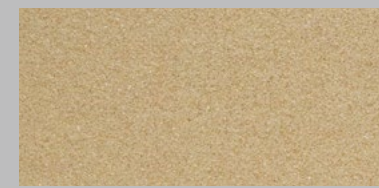
900/45-The Edge



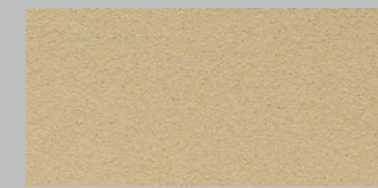
900/02-Blanc  
Additive 8



900/02-Blanc



900/13-Almond  
Additive 8



900/13-Almond



900/06-Blush  
Additive 8



900/06-Blush



900/22-Nutshell  
Additive 8



900/22-Nutshell



950/21-Addiction  
Additive 8



950/21-Addiction



950/27-Flamenco  
Additive 8



950/27-Flamenco



900/42-Ciel  
Additive 8



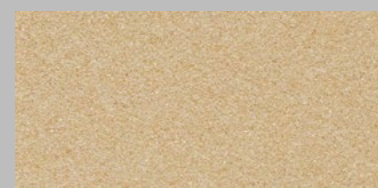
900/42-Ciel



900/51-Shadow  
Additive 8



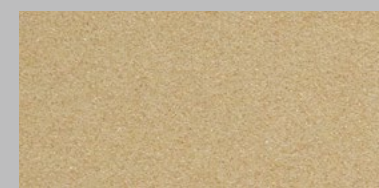
900/51-Shadow



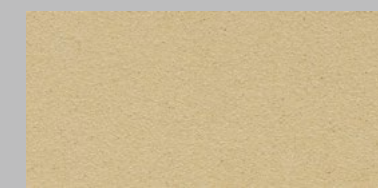
900/05-Paille  
Additive 8



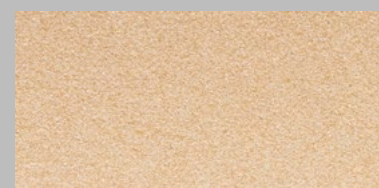
900/05-Paille



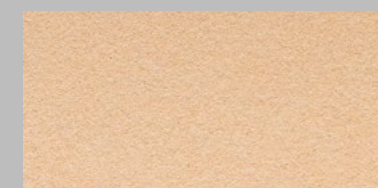
900/07-Cinnamon  
Additive 8



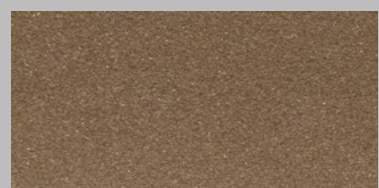
900/07-Cinnamon



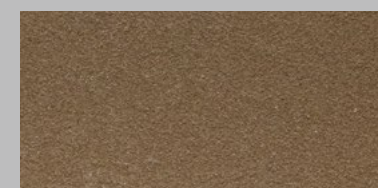
900/18-Warm Tan  
Additive 8



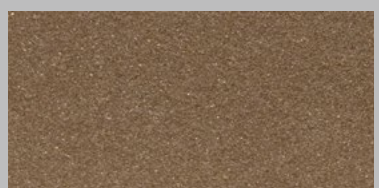
900/18-Warm Tan



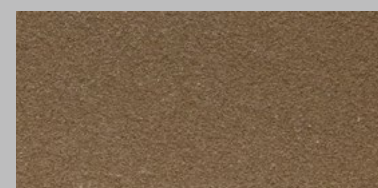
900/28-Cashmere  
Additive 8



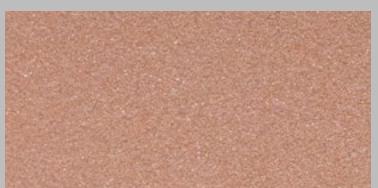
900/28-Cashmere



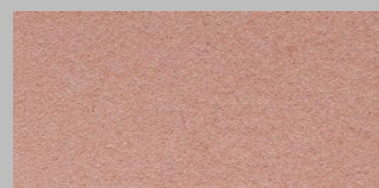
950/26-Latte  
Additive 8



950/26-Latte



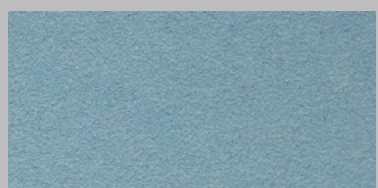
950/33-Crazy Love  
Additive 8



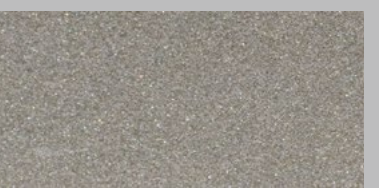
950/33-Crazy Love



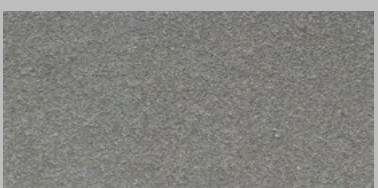
900/35-Heavenly  
Additive 8



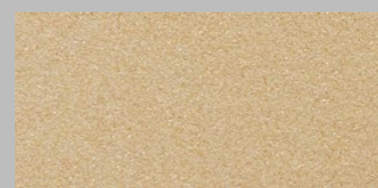
900/35-Heavenly



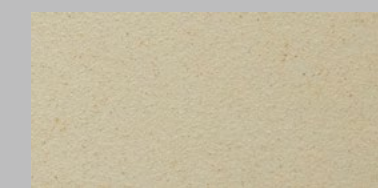
900/57-Late Night  
Additive 8



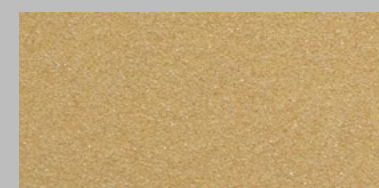
900/57-Late Night



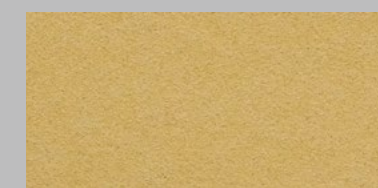
900/11-Allure  
Additive 8



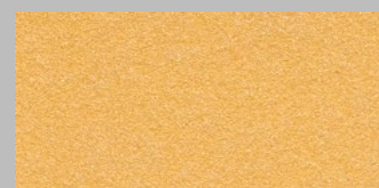
900/11-Allure



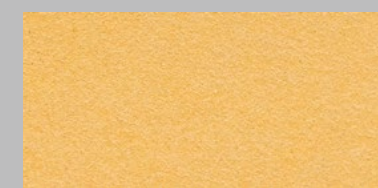
900/19-Spicy  
Additive 8



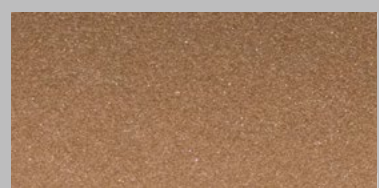
900/19-Spicy



900/23-Bullions  
Additive 8



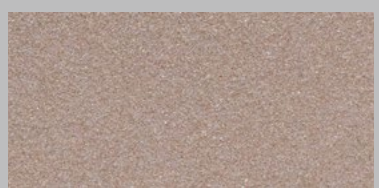
900/23-Bullions



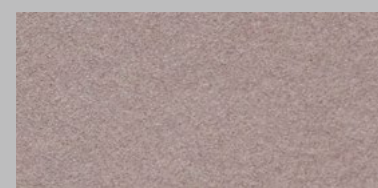
900/10-Brunette  
Additive 8



900/10-Brunette



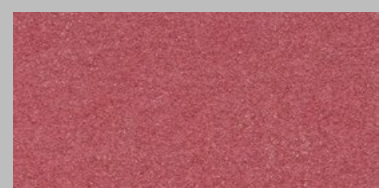
950/30-Cocoa  
Additive 8



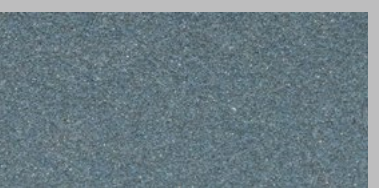
950/30-Cocoa



950/29-Apple Red  
Additive 8



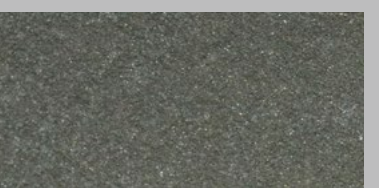
950/29-Apple Red



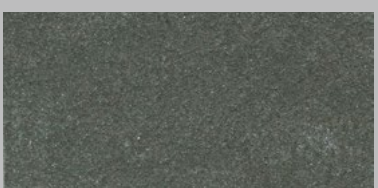
900/44-Acid Blue  
Additive 8



900/44-Acid Blue



900/54-Licorice  
Additive 8



900/54-Licorice