

POLISHED PLASTER®
MINERAL FINISH



COLORTEK®

COLORTEK[®]



SMOOTH
MARBLE SHEEN





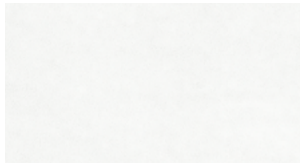
Crystal Rain 1200/01



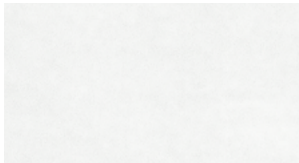
Linen 1200/02



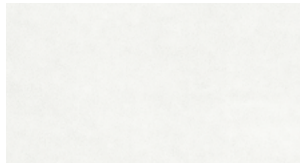
Space 1200/03



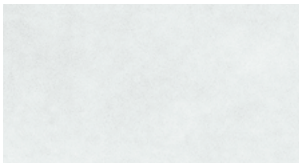
Old Paper 1200/04



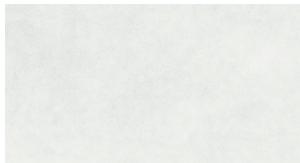
Spirit 1200/05



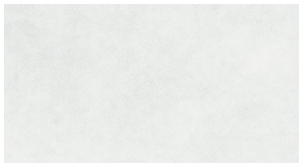
Dust 1200/06



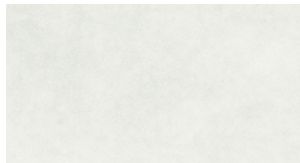
Cloudy 1200/08



Clay 1200/09



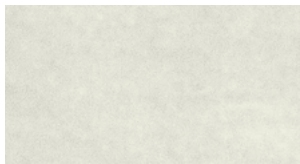
Olive 1200/10



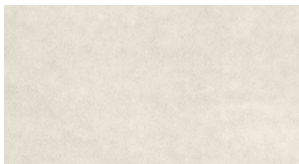
Olive Tint 1200/11



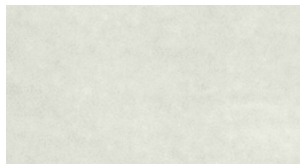
Footprints 1200/57



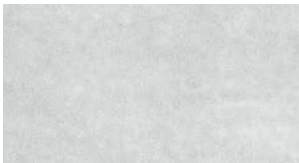
Shadow 1200/12



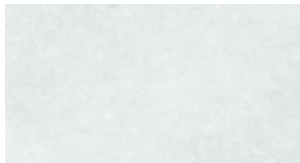
Stone 1200/14



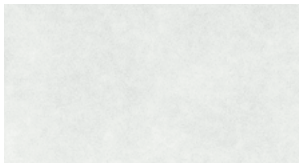
Taupe 1200/15



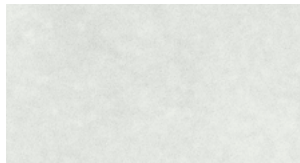
Saray 1200/13



Moonlight 1200/16



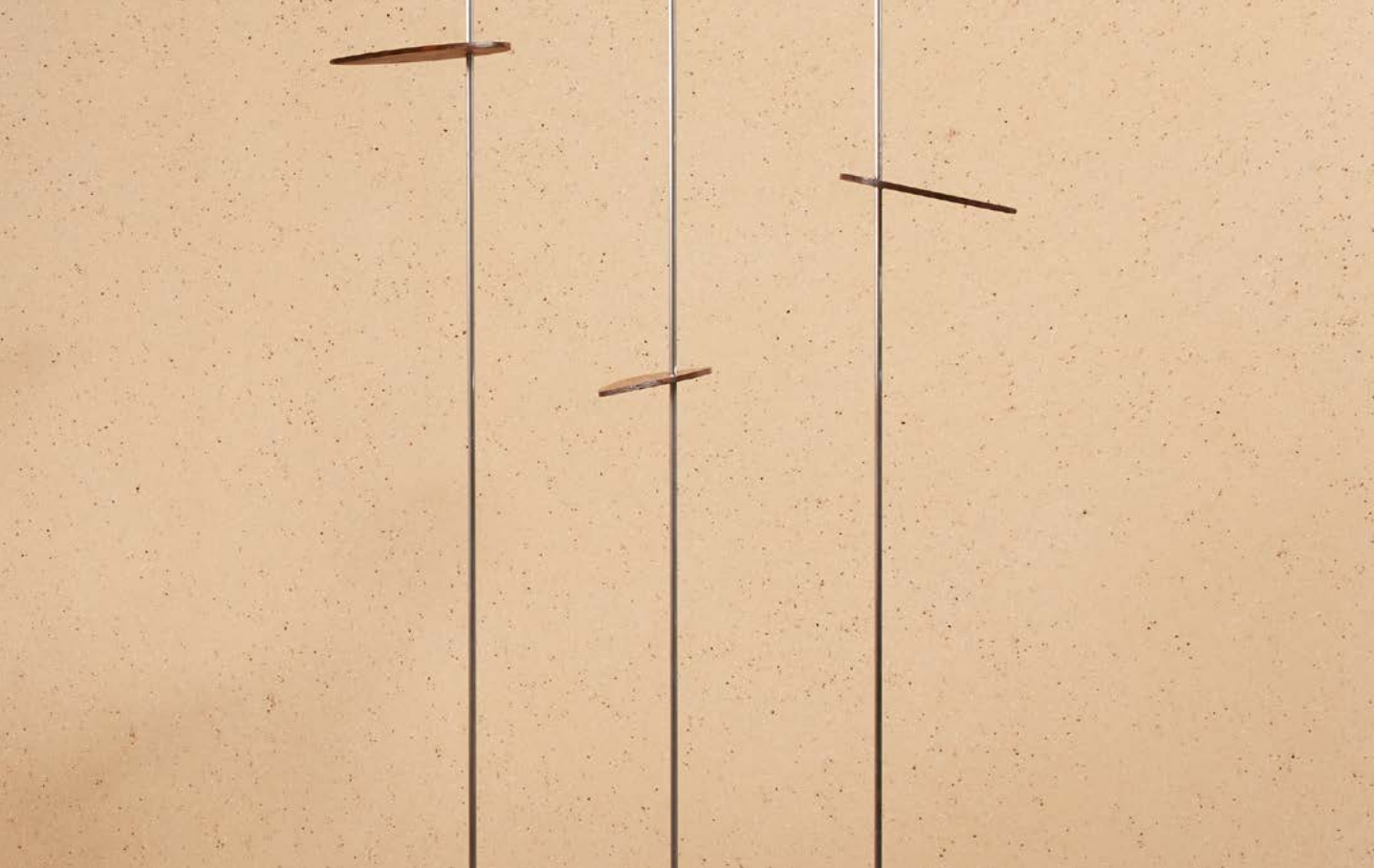
Minerals 1200/17



Silvermink 1200/18

SMOOTH GOLD RUSH
GRANITE



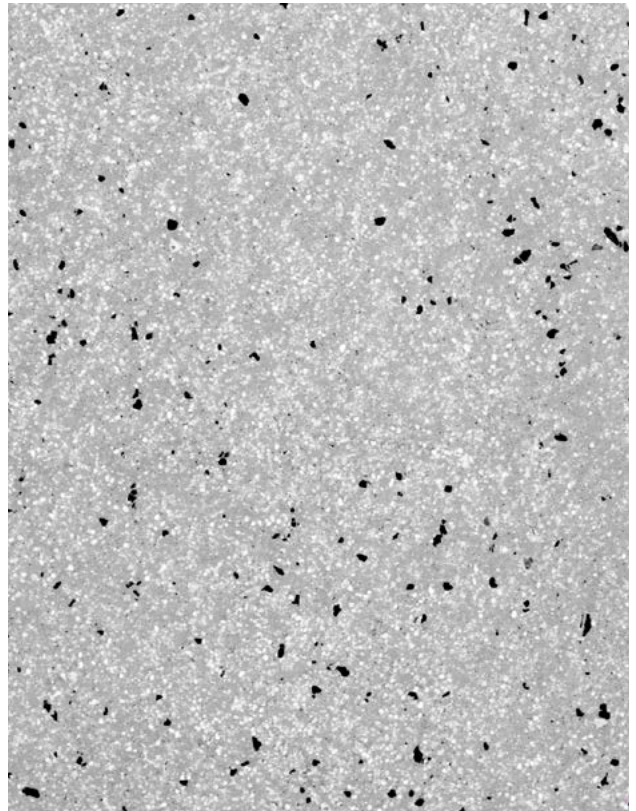




Sunstone 1200/07 - Gold Rush Caju



Footprints 1200/57 - Gold Rush Carrara



Sarray 1200/13 - Gold Rush Anthracite

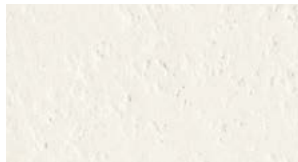
PITTED
HONED LIMESTONE







White Smoke 1200/00



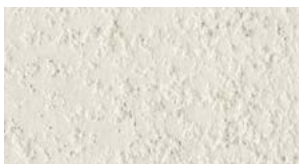
Cotton Field 1200/19



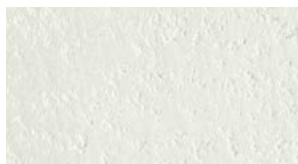
Whisper 1200/20



Taupe Tone 1200/21



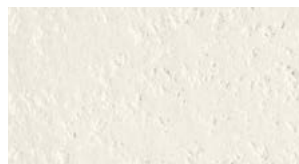
Havana 1200/22



Felt 1200/23



Vanilla 1200/24



Antique 1200/25



Footprints 1200/57



Claystone 1200/26



Light Cement 1200/27



Archive 1200/28



Bone 1200/29



Portland Stone 1200/30



Sunstone 1200/07



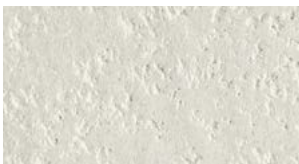
China Clay 1200/31



Linen Wash 1200/32



French Grey 1200/33



Plaster 1200/34



Attic 1200/79



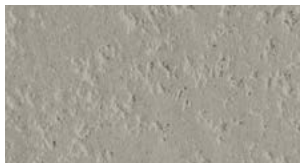
Sepia 1200/35



Cork 1200/36



Heat 1200/37



Sublime 1200/38



PITTED METALLO®
STEEL REFLECTIONS









Smoke White 1200/00



Parasol 1200/39



Cinnamon 1200/40



Ash 1200/41



Mist 1200/42



Empire 1200/43



Pewter 1200/44



Canvas 1200/45



Country 1200/46



Estate 1200/47



Plateau 1200/48



British Oak 1200/49



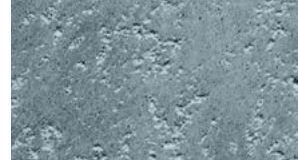
Denim 1200/50



Harbor 1200/51



Obscure 1200/52



Basalt 1200/53

Topped with Metallo® Roman Silver

ACCENT
LUXURY STONE







Topped with Metallo® Terra Dust



Wood berry 1200/54



Dry set 1200/55



Silversmith 1200/56



Lintel 1200/58



Chalk stripes 1200/59

Topped with Metallo® Roman Silver

TRAVERTINE
NATURAL STONE







Desert Breeze 1200/60



Pale Moon 1200/61



Urban 1200/62



Honey Butter 1200/63



Nickel 1200/64



Landmark 1200/65



Silica Sand 1200/66



Sandy 1200/67



Cream 1200/68



Sunstone 1200/07



Tangold 1200/69



Soft Shell 1200/70





BESPOKE
TAILOR-MADE







Wavy 1200/71



Chaos 1200/72



Conception 1200/73



Blackwood 1200/74



Milestones 1200/75



On The Corner 1200/76



Earth Tone 1200/77



Rods 1200/78



POLISHED PLASTER®

MINERAL FINISH

DESCRIPTION

Polished Plaster® is a natural mineral decorative coating that can be applied in a variety of manners to create a wide range of stone effects including Smooth, Pitted, Travertine, Accent, etc.

Polished Plaster® is available in 4 versions: Polished Plaster®, Polished Plaster® DP (with dark particles), Polished Plaster® MP (with dark and light particles) and Polished Plaster® Filler (ready-mixed powder form).

TECHNICAL NAME

Mineral Coating.

RECOMMENDED USE

Interior or exterior application provided it is top coated with the appropriate protection (refer to adjacent table).

SUBSTRATES

Plaster, embossed wall coverings, gypsum board, concrete, cement rendering, brick work, etc.

FINISH

Natural stone effect.

COVERAGE

0.5 m² per kg.

DRYING TIME

15 to 60 minutes depending on temperature and humidity.

THINNER

No thinning required.

PREPARATION

Surfaces should be clean, dry, and free of loose and flaking material.

INSTRUCTIONS

Prime the substrate with Colortek® Fondo F.

Apply a first coat of Polished Plaster® with an Inox trowel realizing a smooth effect. Leave to dry then apply a second coat. Using a clean trowel, smooth over the wall every 15 minutes until the surface achieves a polished appearance.

Pitted, Travertine and Accent effects can be obtained by using specific Colortek® tools and by adding Colortek® marble chips. For details, refer to the technical data sheets.

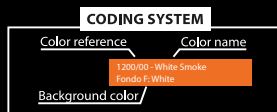
PACKAGING

- Polished Plaster® & Polished Plaster® DP: 1US Drum - 25 kg.
- Polished Plaster® Filler : 1US Drum - 18 kg.
- Marble Chips 6 kg for 1 Drum.
- Resin 013.
- Gold Rush Additive 0.3KG per Drum – Available in 4 colors: Carrara, Caju, Anthracite and Diamond.

POLISHED PLASTER® SYSTEMS

EFFECT	MARBLE CHIPS & ADDITIVES	HIGHLIGHT	INTERIOR PROTECTION	EXTERIOR PROTECTION	TOOLS
Accent	Marble Chips	Metallo® mixed with Classic Color*	Oxibond 4005	Oxibond 4005	Inox trowel Deco Tool Ref. 786
Pitted	Marble Chips	None	Oxibond 4005	Oxibond 4005	Inox trowel Deco Tool Ref. 110/75
Pitted Metallo®	Marble Chips	Metallo® mixed with Classic Color*	Oxibond 4005	Oxibond 4005	Inox trowel Deco Tool Ref. 110/75
Travertine	Marble Chips	None	Oxibond 4005	Oxibond 4005	Inox trowel Sponge Pad
Smooth	None	None	Cera Wax	Oxibond 4005	Inox trowel
Smooth Gold Rush	Gold Rush Additive	None	Cera Wax	Oxibond 4005	Inox trowel

* Proper lighting should be directed towards the wall to bring out the metallic sheen in Polished Plaster® highlighted with Colortek® Metallo®.



POLISHED PLASTER®

EFFET MINERAL

DESCRIPTION

Polished Plaster® est un revêtement minéral permettant de simuler des textures et finitions telles que les incrustations matière dans la matière, les reliefs ou même un aspect poli.

Disponible en 3 versions ; Polished Plaster®, Polished Plaster® DP (pâte mélangée avec des particules noires) et Polished Plaster® Filler (sous forme de poudre).

NOM TECHNIQUE

Revêtement Minéral.

USAGE

Application en intérieur ou extérieur lorsqu'il est recouvert de la couche de protection adéquate (voir table adjacente).

SUPPORT

Enduit, ciment, anciennes peintures usuelles absorbantes, etc.

FINITION

Effet pierre naturelle.

RENDEMENT

0.5 m² par kg.

TEMPS DE SÉCHAGE

15 à 60 minutes en fonction de la température et humidité ambiante.

DILUANT

Aucune dilution requise.

PRÉPARATION

Le support doit être dur, propre, sain, sec, cohésif et libre de toute matière pouvant empêcher l'adhérence du produit.

INSTRUCTIONS

Appliquez la sous-couche Colortek® Fondo F.

Appliquez une couche de Polished Plaster® à l'aide d'une truelle et réaliser un effet lisse. Après séchage, appliquez une seconde couche en positionnant la truelle à 45 degrés. Procédez au ferrage toutes les 15 à 20 minutes, jusqu'à ce que la surface soit polie. Laissez sécher pendant 2 à 3 jours et appliquez la cire de protection appropriée.

Les effets Travertine, Pitted et Accent peuvent être obtenus à l'aide des outils Colortek® Spécifiques et en ajoutant les Colortek® Marble Chips. Se référer aux fiches techniques pour les instructions détaillées.

EMBALLAGE

- Polished Plaster® & Polished Plaster® DP: Seau de 25 kg.
- Polished Plaster® Filler : Seau de 18 kg.
- Marble Chips: 6 kg pour 1 seau.
- Resin 013.
- Gold Rush Additif 0.3KG par seau, disponible en 4 couleurs: Carrara, Caju, Anthracite et Diamond.

SYSTÈMES POLISHED PLASTER®

EFFET	MARBLE CHIPS & ADDITIFS	ACCENT	PROTECTION INTÉRIEUR	PROTECTION EXTÉRIEUR	OUTILS
Accent	Marble Chips	Metallo® melangé avec Classic Color*	Oxibond 4005	Oxibond 4005	Truelle Inox Deco Tool Ref. 786
Pitted	Marble Chips	Aucun	Oxibond 4005	Oxibond 4005	Truelle Inox Deco Tool Ref. 110/75
Pitted Metallo®	Marble Chips	Metallo® melangé avec Classic Color*	Oxibond 4005	Oxibond 4005	Truelle Inox Deco Tool Ref. 110/75
Travertine	Marble Chips	Aucun	Oxibond 4005	Oxibond 4005	Truelle Inox Tampon Éponge
Smooth	Aucun	Aucun	Cera Wax	Oxibond 4005	Truelle Inox
Smooth Gold Rush	Gold Rush Additive	Aucun	Cera Wax	Oxibond 4005	Truelle Inox

* Il est recommandé d'installer un système d'illumination approprié afin de mettre en valeur les cristaux et l'effet métallique de Polished Plaster® traité avec Colortek® Metallo®.

SYSTÈME DE CODAGE	
Référence couleur	Nom de la couleur
	120100 - White Smoke Fondo F-White
Couleur de fond	





COLORTEK[®]

Product designed in the EU

www.colortek.eu
info@colortek.eu



**Synergy, Added Value, Continuous Improvement,
Diversity, Integrity, Social Responsibility.**